

Airframe[®]

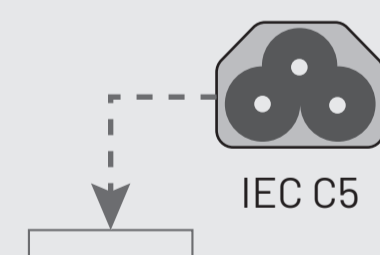
ATTENZIONE!
PRIMA DI ACCENDERE
AirFrame,
RIMUOVERE LA
COVER E SEGUIRE LE
ISTRUZIONI PER IL
MONTAGGIO
DEL FILTRO ESP

Caution!
Before turning
on Airframe,
remove the cover and
follow the instructions for
mounting the ESP filter

49,4cm

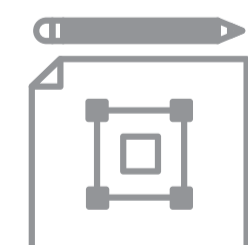
Area vano posteriore AirFrame[®]
Rear compartment area AirFrame[®]

Airframe[®]



IEC C5

Area vano posteriore AirFrame[®]
Rear compartment area AirFrame[®]



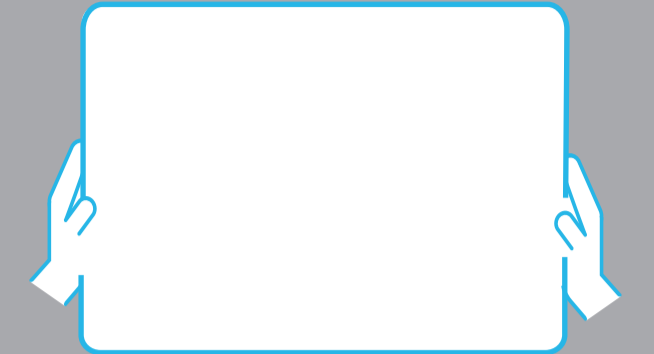
utilizzami come guida per installare il Tuo AirFrame[®]

use me as a guide to install Your AirFrame[®]

Materiale utile: N°4 Tasselli (Ø n.8) per il fissaggio a muro, n°4 Viti e rondelle (10mm Ø esterno, 0,5mm Ø interno) per il fissaggio a muro
Useful material: 4 Dowel (Ø n.8) for wall mounting, 4 Screws and washers* (10mm outer Ø, 0.5mm inner Ø) for wall mounting

80,8cm

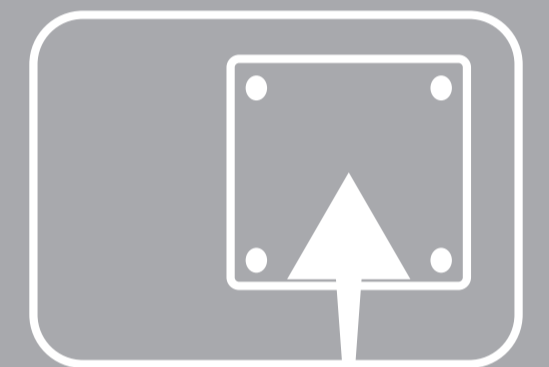
1



**RIMUOVERE
LA COVER
FACENDO LEVA
DAL BASSO**

Remove the cover
by prying it off
from the bottom.

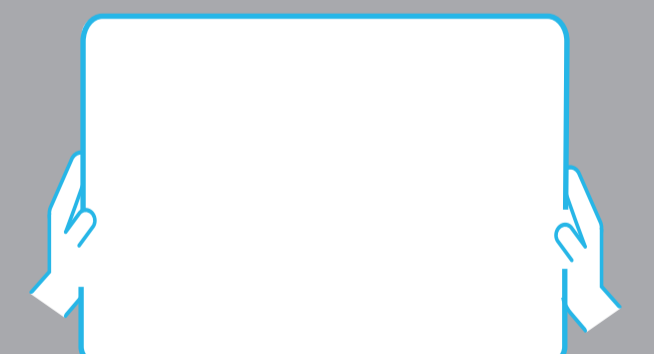
2



**MONTARE
IL FILTRO ESP**

Mount the
ESP filter

3



**RICHIUDERE
LA COVER**

Close the
cover again